

TO WIN UNIVERSAL CONFIDENCE WITH KDL  
QUALITY AND REPUTATION



Focus On Medical Equipment Manufacturing

## DISPOSABLE BLOOD COLLECTION NEEDLE



## Shanghai Kindly (KDL) Group

### Nanchang Kindly Medical Technology Co.,Ltd.

Add: F/7, Tower A, No.77 North Aixihu Road, Nanchang High-Tec Industry Development Zone, Nanchang, Jiangxi. China

Post Code: 330096

Tel: +86-0791-86861216

Mob: +86-13922143599

Web: [www.kdInc.com](http://www.kdInc.com)

E-mail: [Melvin.lu@kdInc.com](mailto:Melvin.lu@kdInc.com)



# KNBCP02 Type Blood Collection Needle

## —Visible blood flashback

Transparent-designed Blood Collection Needle (Type KNBCP02) is a special design from KDL. When the blood is taken from the vein, this product can make the observation of transfusion condition become possible through the transparent design of the tube. Thus, the possibility of a successful blood-taking is greatly increased. In addition, this product has avioded the patients’ pain and soft tissue injury caused by ‘guessing puncture’ or repetitive puncture, which reduces the worklaod of doctors and nurses. Besides, the pain brought to the patients can be relieved and the waste of medical instrument can be minimised. Currently, it has become a comparatively safe puncturing instrument in the application of blood taking in the clinic.



### OPERATION METHOD



- 1、Clockwise rotation of the needle is connected at one end with the holder.
- 2、After puncture can be seen blood of back in the window.

### KNBCP02 TYPE

Gauge	OD(mm)	Color	SIZE	REF	Length
23G	0.60	blue	23Gx25	KNBCP0223G25	1" (25mm)
23G	0.60	blue	23Gx38	KNBCP0223G38	1 1/2" (38mm)
22G	0.70	black	22Gx38	KNBCP0222G38	1 1/2" (38mm)
22G	0.70	black	22Gx25	KNBCP0222G25	1" (25mm)
21G	0.80	green	21Gx38	KNBCP0221G38	1 1/2" (38mm)
21G	0.80	green	21Gx25	KNBCP0221G25	1" (25mm)

\*Remark: normal size in above table, we can also make special size as clients’ request.

## COMPANY INTRODUCTION

Zhejiang Kindly Medical Devices Co., Ltd was established in 1987, as a subordinate company of Kindly Group, KDL specialized in disposable medical puncture devices manufacture and pay high attention to product quality and quality control.In China, KDL is the first company passed CMDC certificate in medical devices industry in 1998 and got EU TUV certificate and American FDA on site audit successively. The company own international advanced medical needle manufacturing equipment and process. With auto-welding capillary, capillary drawing, diameter reducing, cropping, automatic sharpening, automatic needle tubing cleaning, automatic needle tubing detection. The company has strong production strength with an annual output of 7 billion medical needle tips, KDL become in forefront of the domestic medical devices industrial. KDL Blood Collection Needle contain safety type blood collection needle, visible flashback blood collection needle, blood collection components with complete specifications and model.

The idea of “To win universal confidence with KDL quality and reputation” has been rooted in the mind of KDL people and drive KDL provide high quality medical devices and excellent after-sales Service to all customers.





KNBCSS Type Safety Blood Collection Needle

KNBCSS type safety blood collection needle is a KDL designed safety vein blood collection needle which connect safety scalp vein set with blood collection components.Push the safety protector after using up in order to shield off needle tip and avoid it stabbing nurse. The product have KNBCSS02 type and KNBCSS03 type with independent package for clinical choice.



OPERATION METHOD



KNBCSS02 TYPE & KNBCSS03 TYPE

Gauge	OD(mm)	Color	SIZE	KNBCSS02 TYPE REF	KNBCSS03 TYPE REF	Length
25G	0.50	orange	25Gx20	KNBCSS0225G20	KNBCSS0325G20	3/4" (20mm)
23G	0.60	blue	23Gx20	KNBCSS0223G20	KNBCSS0323G20	3/4" (20mm)
22G	0.70	black	22Gx20	KNBCSS0222G20	KNBCSS0322G20	3/4" (20mm)
21G	0.80	green	21Gx20	KNBCSS0221G20	KNBCSS0321G20	3/4" (20mm)
20G	0.90	yellow	20Gx20	KNBCSS0220G20	KNBCSS0320G20	3/4" (20mm)
19G	1.10	cream	19GX20	KNBCSS0219G20	KNBCSS0319G19	3/4" (20mm)

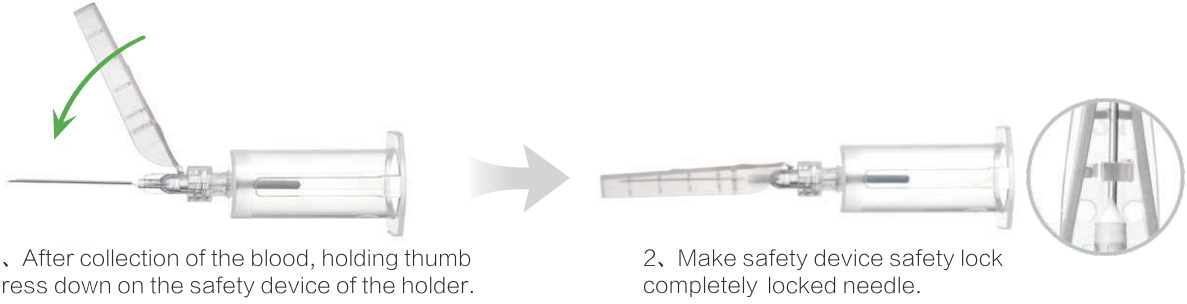
\*Remark: normal size in above table, we can also make special size as clients' request.

KNBCHS Type Safety Blood Collection Needle

KNBCHS type safety blood collection needle is a KDL designed safety vein blood collection needle which connect safety hypodermic needle with blood collection components.Push the safety protector after using up in order to shield off needle tip and avoid it stabbing nurse. This product have KNBCHS01、KNBCHS02 type and KNBCHS03 type with independent package for clinical choice.



OPERATION METHOD



KNBCHS01 TYPE & KNBCHS02 TYPE & KNBCHS03 TYPEZZ

Gauge	OD(mm)	Color	SIZE	KNBCHS01 TYPE REF	KNBCHS02 TYPE REF	KNBCHS03 TYPEZZ REF	Length
23G	0.60	Blue	23Gx38	KNBCHS0123G38	KNBCHS0223G38	KNBCHS0323G38	11/2" (38mm)
22G	0.70	Black	22Gx38	KNBCHS0122G38	KNBCHS0222G38	KNBCHS0322G38	11/2" (38mm)
22G	0.70	Black	22Gx25	KNBCHS0122G25	KNBCHS0222G25	KNBCHS0322G25	1" (25mm)
21G	0.80	Green	21Gx38	KNBCHS0121G38	KNBCHS0221G38	KNBCHS0321G38	11/2" (38mm)
21G	0.80	Green	21Gx25	KNBCHS0121G25	KNBCHS0221G25	KNBCHS0321G25	1" (25mm)
20G	0.90	Yellow	20Gx38	KNBCHS0120G38	KNBCHS0220G38	KNBCHS0320G38	11/2" (38mm)
18G	1.20	Pink	18Gx38	KNBCHS0118G38	KNBCHS0218G38	KNBCHS0318G38	11/2" (38mm)

\*Remark: normal size in above table, we can also make special size as clients' request.

Blood Collection Needle with Safety Device for Single Use

KDL blood collection needle with safety device, the design of safe protector cap can shield the cannula after use, prevent needlepoint from stabbing nurse, patient or other people, which can effectively reduce infection. This kind of blood collection needle with safety device is a safe substitute of the general blood collection needle for clinical application.



Intended use:

This kind of product which is used for blood collection is applicable for needle holder and vacuum tube for blood sample collection.

Product composition:

Disposable blood collection needle is composed of safety device, top protect cap, bottom protect cap, hub, needle tube and rubber cap. All parts and materials used for the products meet medical requirement, sterilized by ETO, pyrogen-free and safe.

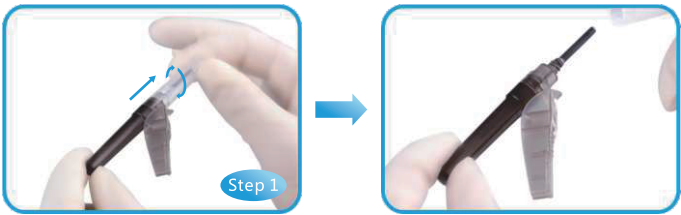
SAFETY BLOOD COLLECTION NEEDLE TYPE

Gauge	OD(mm)	Color	Length
23G	0.60	blue ●	1"~1 1/2" (25~38mm)
22G	0.70	black ●	1"~1 1/2" (25~38mm)
21G	0.80	green ●	1"~1 1/2" (25~38mm)
20G	0.90	yellow ●	1"~1 1/2" (25~38mm)
18G	1.20	pink ●	1"~1 1/2" (25~38mm)

\*Remark: normal size in above table, we can also make special size as clients' request.

Safety blood collection needle for single use

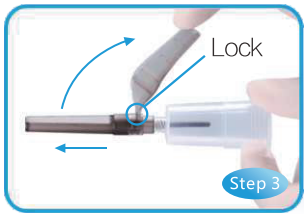
Instruction for use



Try to make upper white protect cap face upwards with one hand and take bottom protect cap with the other hand. Rotate white protect cap and keep parallel to the rubber cap. Leave rubber cap still on the needle cannula when we remove the white protect cap.



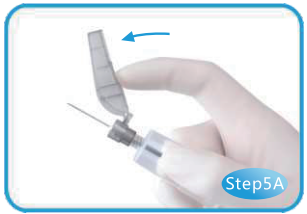
Take bottom protect cap with one hand and take needle holder with the other hand. Put clockwise rotation of blood collection needle into the holder and lock the needle completely.



Open safety device of the blood collection needle until it is locked. Then remove the bottom protect cap of needle tip.



Vein puncture according to the vein infusion method of clinical nursing. Put the other end of blood collection needle into vacuum tube of blood sample collection. Blood will flow automatically into blood collection tube under differential pressure.



After collection of the blood, holding thumb press down on the safety device of the holder with two hands. Make safety device lock the needle completely.

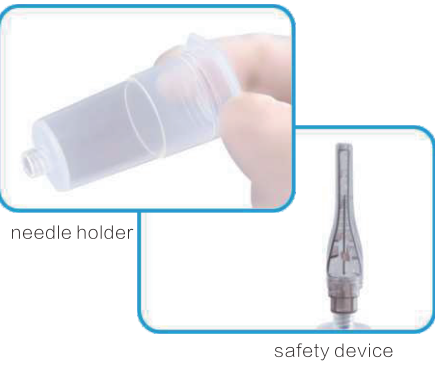


After collection of the blood, holding thumb press down on the safety device of the holder with one hand. Make safety device lock the needle completely. We are free to use either of above two methods.

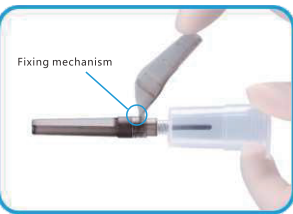


Product features:

1. safety device+needle holder  
Avoid needlepoint stabbing and reduce blood infection during clinical application.



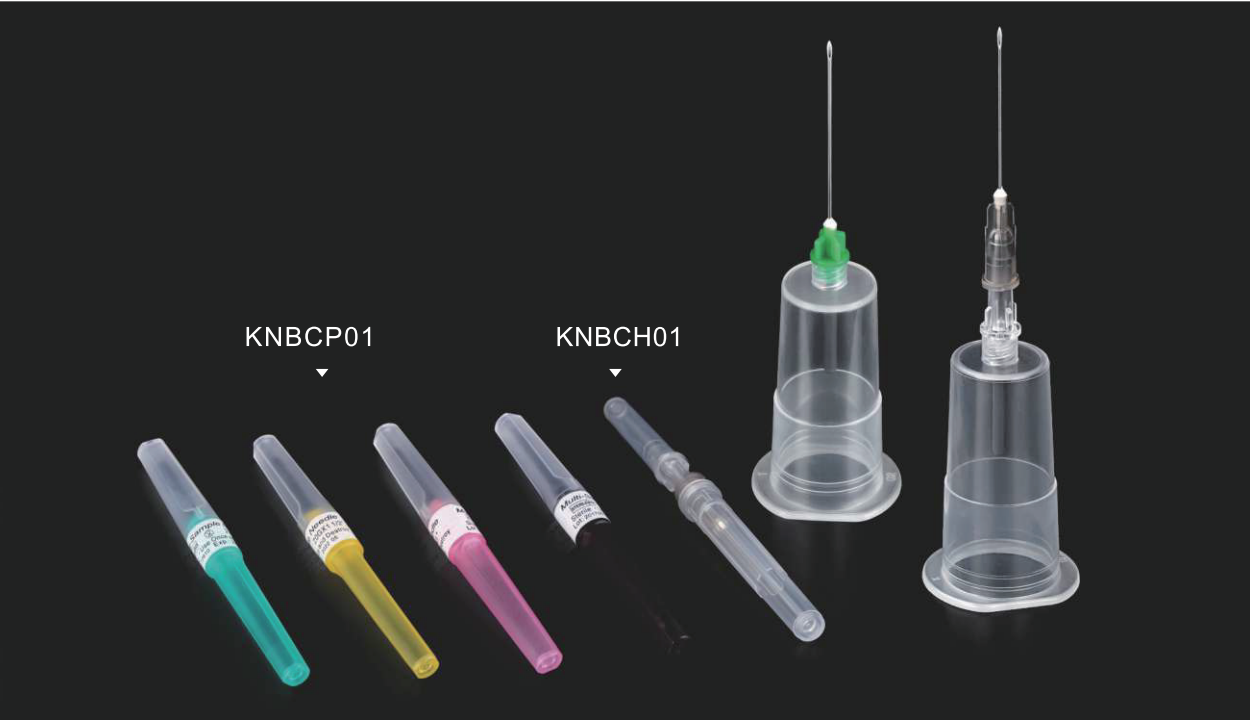
2. safety lock in safety device  
There is a specific design of safety lock in safety device, and it's more preferable for nurses to operate.





KNBCP Type Blood Collection Needle

Blood Collection Needle (Type KNBCP) is a comparatively economical needle produced by KDL. With its simple design and low inner volume of the tube, it can be easily handled and the blood sample can be fully collected by the clinic. Therefore, it is considered to be a very economical and useful blood collection needle.



KNBCP01 (Pen) TYPE

Gauge	OD(mm)	Color	SIZE	REF	Length
23G	0.60	blue	23Gx38	KNBCP0123G38	11/2" (38mm)
22G	0.70	black	22Gx38	KNBCP0122G38	11/2" (38mm)
22G	0.70	black	22Gx32	KNBCP0122G32	11/4" (32mm)
21G	0.80	green	21Gx38	KNBCP0121G38	11/2" (38mm)
21G	0.80	green	21Gx25	KNBCP0121G25	1" (25mm)
20G	0.90	yellow	20Gx38	KNBCP0120G38	11/2" (38mm)
18G	1.20	pink	18Gx38	KNBCP0118G38	11/2" (38mm)

\*Remark: normal size in above table, we can also make special size as clients’ request.

KNBCH01 (Injection Needle) TYPE

Gauge	OD(mm)	Color	SIZE	REF	Length
23G	0.60	blue	23Gx38	KNBCH 0123G38	11/2" (38mm)
22G	0.70	black	22Gx38	KNBCH 0122G38	11/2" (38mm)
21G	0.80	green	21Gx38	KNBCH 0121G38	11/2" (38mm)
20G	0.90	yellow	20Gx38	KNBCH 0120G38	11/2" (38mm)
18G	1.20	pink	18Gx38	KNBCH 0118G38	11/2" (38mm)

\*Remark: normal size in above table, we can also make special size as clients’ request.

KNBCS Type of Blood Collection Needle

Blood Collection Needle (Type KNBCS) is a medical instrument which combines the butterfly-winged infusion set with the blood collecting set. Now, it has been applied into clinical use. Through the end of the extension tube of blood collection needle, the transfusion condition can be well observed, which makes blood collection become successful. Currently, KDL has produced single-winged blood collection needle (Type KNBCS01), butterfly-winged blood collection needle (Type KNBCS02) and butterfly-winged blood collection needle with holder (Type KNBCS03) for clinical uses.

KNBCS01 TYPE

Gauge	OD(mm)	Color	SIZE	REF	Length
24G	0.55	purple	24Gx20	KNBCS0124G20	(20mm)
23G	0.60	blue	23Gx25	KNBCS0123G25	(25mm)
22G	0.70	black	22Gx25	KNBCS0122G25	(25mm)
21G	0.80	green	21Gx28	KNBCS0121G28	(28mm)

\*Remark: normal size in above table, we can also make special size as clients’ request.

KNBCS02 TYPE

Gauge	OD(mm)	Color	SIZE	REF	Length
25G	0.50	orange	25Gx20	KNBCS0225G20	3/4" (20mm)
23G	0.60	blue	23Gx20	KNBCS0223G20	3/4" (20mm)
22G	0.70	black	22Gx20	KNBCS0222G20	3/4" (20mm)
21G	0.80	green	21Gx20	KNBCS0221G20	3/4" (20mm)
20G	0.90	yellow	20Gx20	KNBCS0220G20	3/4" (20mm)

\*Remark: normal size in above table, we can also make special size as clients’ request.

KNBCS03 TYPE

Gauge	OD(mm)	Color	SIZE	REF	Length
25G	0.50	orange	25Gx20	KNBCS0325G20	3/4" (20mm)
23G	0.60	blue	23Gx20	KNBCS0323G20	3/4" (20mm)
22G	0.70	black	22Gx20	KNBCS0322G20	3/4" (20mm)
21G	0.80	green	21Gx20	KNBCS0321G20	3/4" (20mm)
20G	0.90	yellow	20Gx20	KNBCS0320G20	3/4" (20mm)

\*Remark: normal size in above table, we can also make special size as clients’ request.



KH Safety Holder

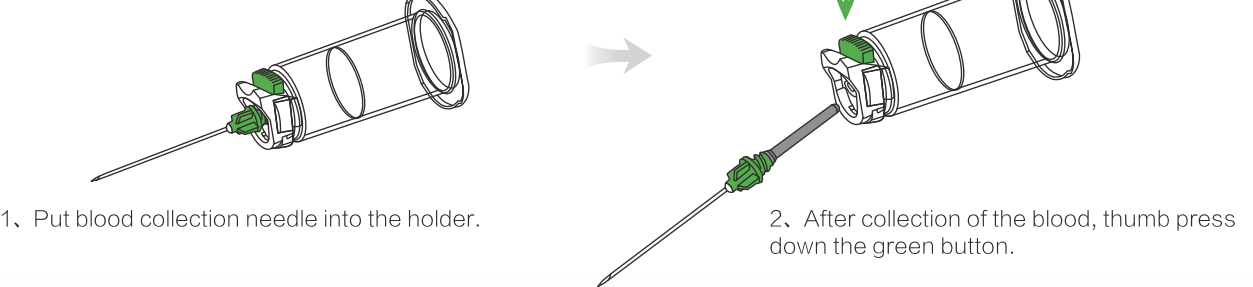
Blood Collection Needles with Safety Holder is a medical instrument produced by KDL. And it is a protective product applied in the clinical venous sampling which is achieved by blood collection needles to secure the operators. This product can be used in combination with the pen-type blood collection needle (Type KNBCP01) produced by our company and other blood collection needles of same structure in the market. And after the combination of two, the point of the needle can be perfectly isolated, which ensures that the needle will not accidentally hurt the doctors and patients. Thus, infection can be effectively reduced. Therefore, this product now has come to become the most common and safe auxiliary medical instrument of the blood collection needles in the application of the clinical department of hospital.



KH05 OPERATION METHOD

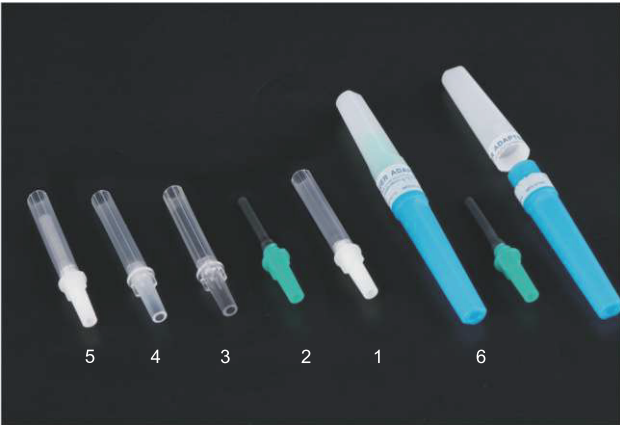


KH06 OPERATION METHOD



Parts

BLOOD COLLECTION NEEDLE PARTS



NO.	Gauge	SIZE	REF	REMARK	DIAGRAM
1	20G	0.9x21mm	KNLA0220G21	ABS	
2	21G	0.8x19mm	KNLA0321G19	ABS	
3	21G	0.8x19mm	KNLA0421G19	ABS	
4	21G	0.8x19mm	KNLA0521G19	PP	
5	21G	0.8x19mm	KNLA0621G19	PP	
6	21G	0.8x19mm	KNLA0721G19	ABS	

HOLDER PARTS FOR BLOOD COLLECTION NEEDLE



ARTWORK NO.	SIZE	REF	DIAGRAM
CTZ.41.00C	0.8x19	KNBCH01	
CTZ.176.00	0.9x19	KNBCH02	
CTZ.177.00	0.9x19	KNBCH03	

HOLDER



ARTWORK NO.	REF	DIAGRAM
CTY.Ix.143	KH01	
CTZ.Ix.153	KH02	
CTZ.Ix.152	KH03	