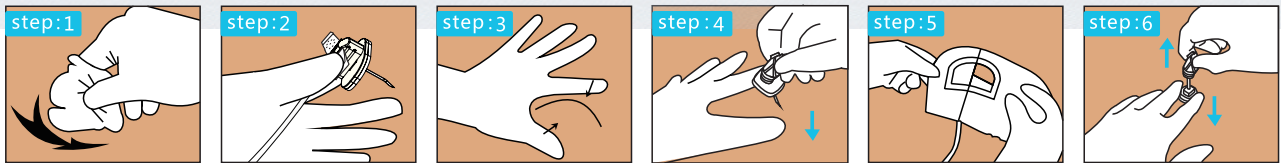


Steps for usage



- step : 1** Disinfection: Take the injection port of the implanted port as the center, disinfect the area with a diamete of 10X12cm, wipe it with disinfectant solution from the inside to the outside in a spiral manner, and wipe it repeatedly 3 times
- step : 2** Vent connection: Connect the huber needle to a syringe filled with 10m sterile saline, expel all air and clamp the extension tube;
- step : 3** Determine the position: To find the septum of injection hub with your non-dominant hand, and fix the injection hub with your thumb , index and middle fingers to make the center of septum arch.
- step : 4** Puncture: Hold the fixed needle hub and puncture the arched septum vertically with the needle tip, pierce the needle into the skin and septum until the bottom of the reservoir, draw back the blood to check that the indwelling position is correct;
- step : 5** Fixing: place sterile gauze under the fixing base, and then fix the transparent applicator in a tension-free manner with the puncture point as the center, shape and smooth the applicator.
- step : 6** Pull out the needle: Use two fingers to hold the fixed base firmly, grasp the fixed base, and slowly pull out the huber needle upwards. Do not pull out obliquely to prevent the needle tube from breaking.
- In order to decrease the blood return, please seal the tube with positive pressure to pull out the fixed needle hub, the needle tip is automatically shielded, loosen the fixed base, take off the product, and dispose of it according to the medical waste treatment method.

| Gauge | OD (mm) | Colour | Length (mm) |    |    |
|-------|---------|--------|-------------|----|----|
|       |         |        | 15          | 19 | 25 |
| 23G   | 0.60    | Blue   |             |    |    |
| 22G   | 0.70    | Black  |             |    |    |
| 21G   | 0.80    | green  |             |    |    |
| 20G   | 0.90    | yellow |             |    |    |
| 19G   | 1.10    | Cream  |             |    |    |

Remark: normal size in above table, we can also make special size as clients’ request.

Shanghai Kindly Group

Nanchang Kindly Medical Technology Co.,Ltd.

Add: F/7,Tower A,No.77 North Aixihu Road, Nanchang High-Tec Industry Development Zone, Nanchang, Jiangxi. China  
Post Code: 330096  
Tel: +86-0791-86861216  
Mob: +86-13922143599  
Web: www.kdInc.com  
E-mail: Melvin.lu@kdInc.com



Huber Needles

SINGLE-USE HUBER NEEDLES USED FOR IMPLANTABLE DRUG-SUPPLYING DEVICES

Normal



Convenient for admistering drug without affecting the flow rate.



Special needle tip design minimize coring and fragmentation

Safety

**Needle tip shielding protection device**  
A unique needle tip shielding device is used to reduce the risk of needle stick injuries



**Colored clamp**  
Easy to identify the needle gauge and stop the infusion at any time



**optional wings**

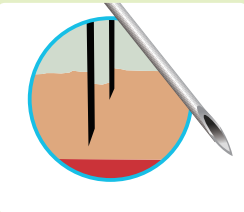


**325 PSI**



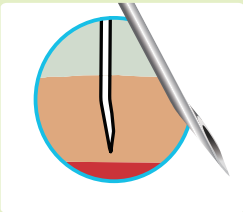


Special needle tip design

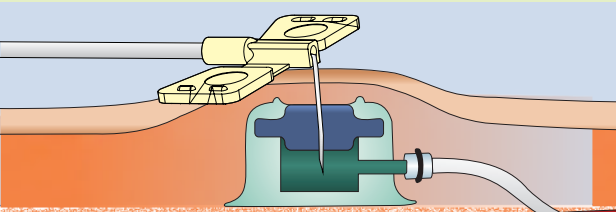


Standard Needle

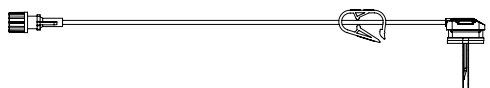
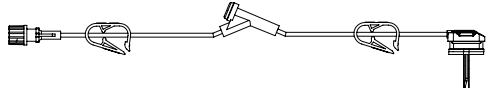
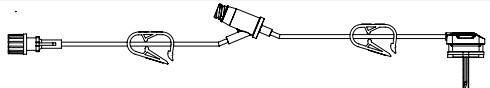
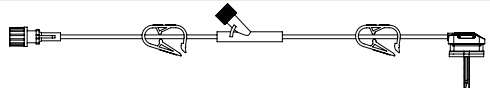
VS



Huber Needles



minimize coring and fragmentation

| Drawing   | Safety Type | Wings type         |
|---|-------------|--------------------|
|  | Type A      | with/without wings |
|  | Type B      | with/without wings |
|  | Type C      | with/without wings |
|  | Type D      | with/without wings |