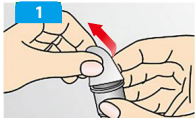
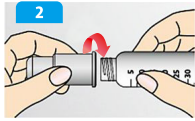




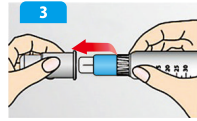
Test Procedure and Interpretation:



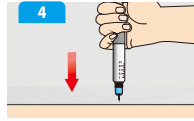
1.Tear off the protective paper



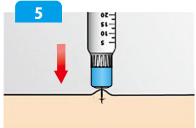
2.Connect to the insulin pen



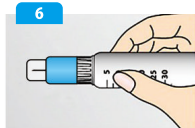
3.remove the outer protective cap



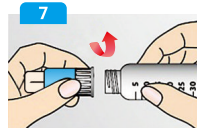
4.90 degree vertical puncture



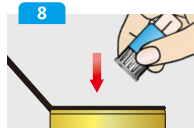
5.Injection



6.Pull out the needle



7.Remove the needle



8.Waste treat

Ordering Information

| Catalog | Needle Size | Needle Length | Package pcs/box | CE Marked |
|----------|-------------|---------------|-----------------|-----------|
| SPN-29-8 | 29G | 8mm | 100 | ✓ |
| SPN-30-4 | 30G | 4mm | 100 | ✓ |
| SPN-30-6 | 30G | 6mm | 100 | ✓ |
| SPN-30-8 | 30G | 8mm | 100 | ✓ |
| SPN-31-5 | 31G | 5mm | 100 | ✓ |

Shanghai Kindly Group

Nanchang Kindly Medical Technology Co.,Ltd.

Add: F/7,Tower A,No.77 North Aixihu Road, Nanchang High-Tec Industry Development Zone, Nanchang, Jiangxi. China

Post Code: 330096

Tel: +86-0791-86861216

Mob: +86-13922143599

Web: www.kdInc.com

E-mail: Melvin.lu@kdInc.com



Safety

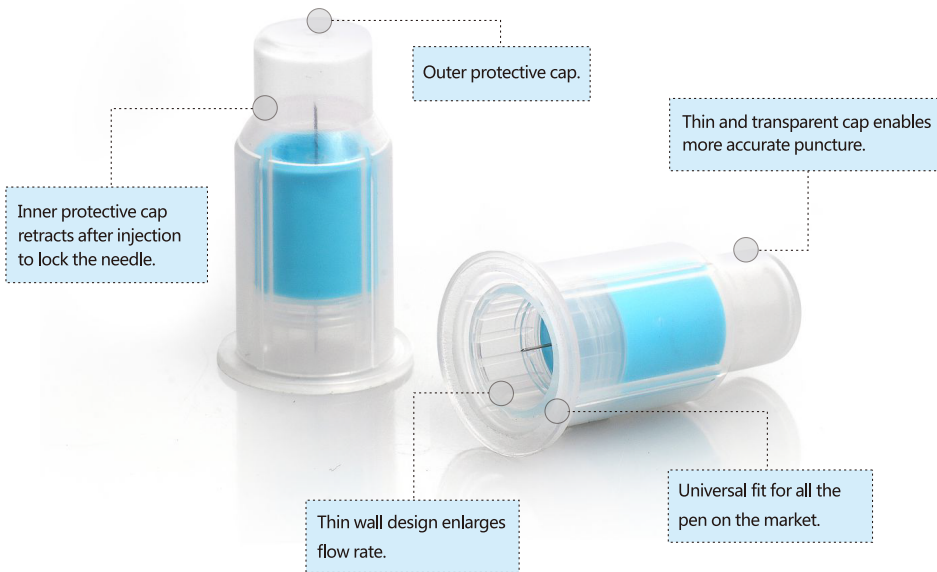
insulin pen needle

Your ideal choice for Safety pen needles!

Patent Number : 201620508723.7 201821420157.x

Safety insulin pen needle

Nanchang Kindly Medical Technology Co.,Ltd.



Features and structure

Safety

- Shield automatically locks after injection to help prevent accidental needlestick
- Visible needle for precision injection

Comfort

- Broad shield diameter reduces pressure on the patient's skin
- Less resistance during the needle penetration

Universal Fit

- Compatible with most available pen models Optipen® Pro 1, HumaPen®, NovoPen® III, YpsoPen® series and Wanbang® Pen series .
- Choices of needle length: 4mm, 5mm, 6mm, 8mm for 29G,30G, 31G, 32G.



1.Before use.

Connect the insulin needle to the pen, and remove the outer protective cap. (The tip part is protected by a transparent protective cap)



2. Injection Process

Fit the protective cover vertically to the skin, then press it down to the end. After hear a "click", the protection device is in the excited state and the needle tip has punctured into the skin.



Advantage

3.After use.

Take out the insulin needle, activate the safety protection device, and automatically complete the needle tip protection.

1. One-handed activation safety mechanism.
2. Small and compact structure for convenient use.
3. Short needle tube with large flow rate and low residue volume.

Vertical injection

